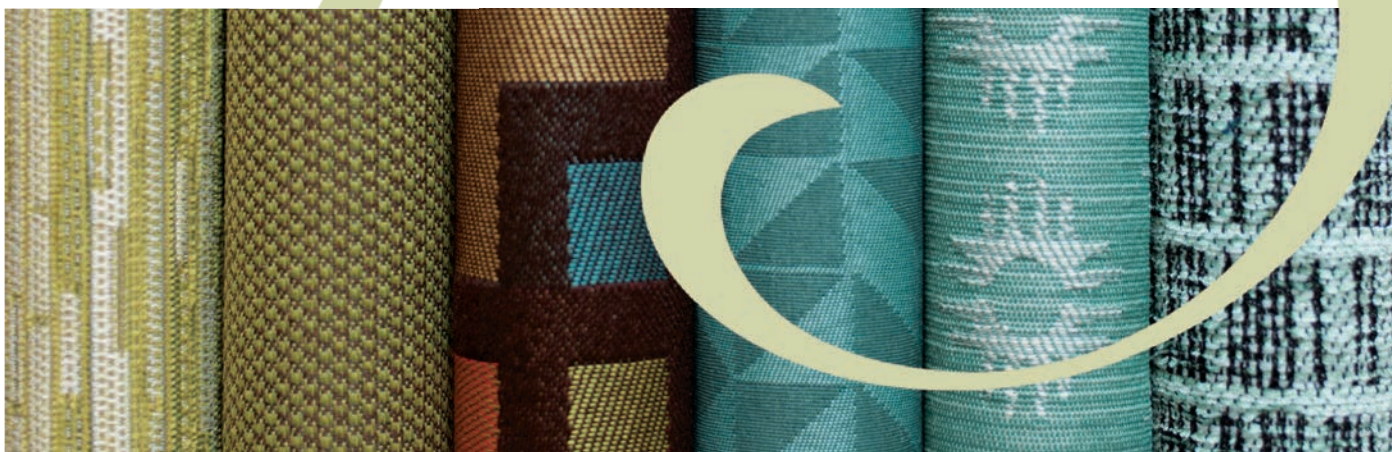




*Celebrating the Revival of American Manufacturing.*

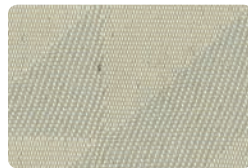


## *American Craft Collection* >>

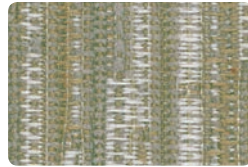
COVERLET  
DRAFT  
FRAMEWORK  
HOPSACK  
REPP  
TREADLE



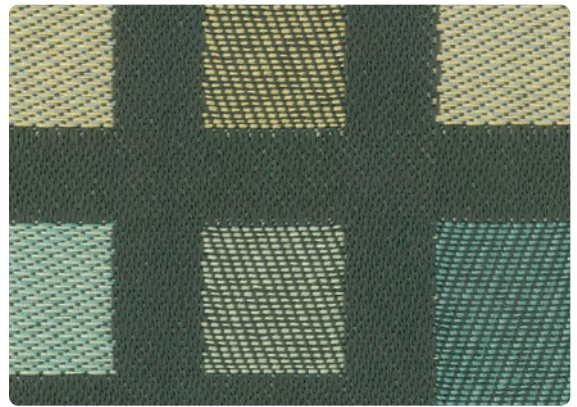
COVERLET  
*Silverware*



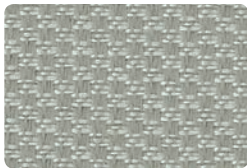
FRAMEWORK  
*Chiffon*



REPP  
*High Desert*



DRAFT  
*Nordic Sky*



HOPSACK  
*Cloud*



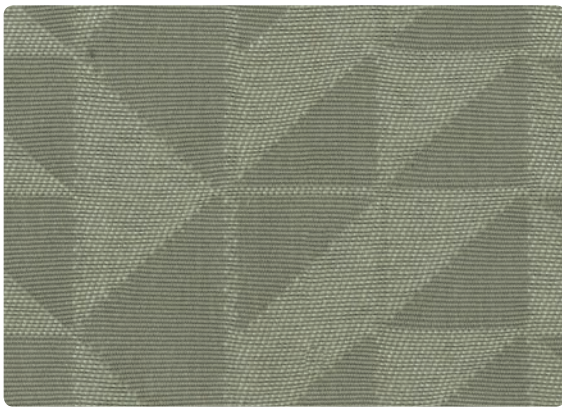
COVERLET  
*Greycoat*



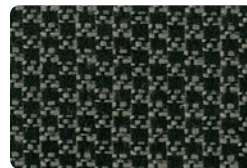
TREADLE  
*Soft Grey*



HOPSACK  
*Toast*



FRAMEWORK  
*Nickel*



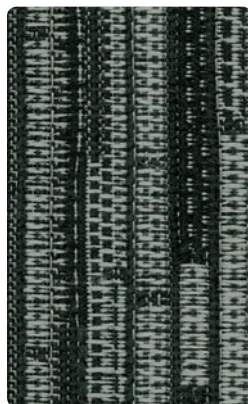
HOPSACK  
*Charcoal*



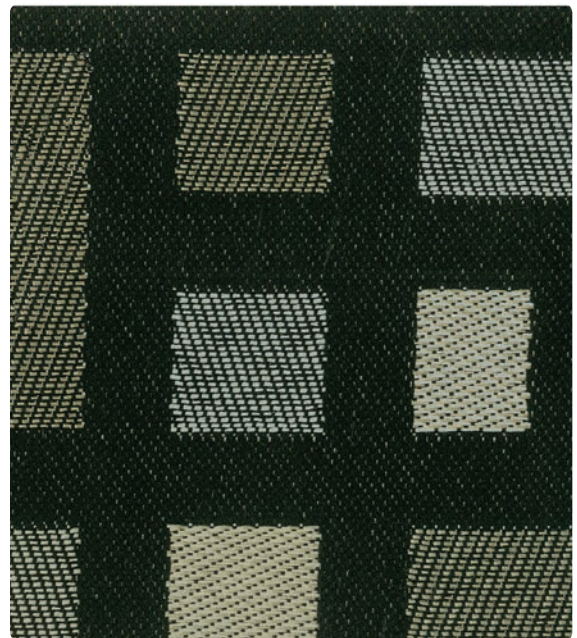
REPP  
*Dark Taupe*



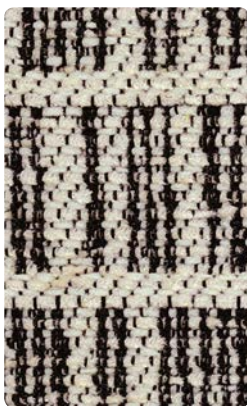
HOPSACK  
*Winter*



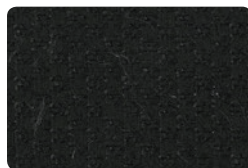
REPP  
*New Moon*



DRAFT  
*Roadway*



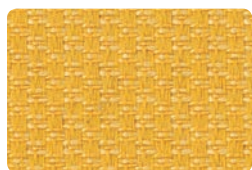
TREADLE  
*Newsprint*



HOPSACK  
*Black*



FRAMEWORK  
*Almost Black*



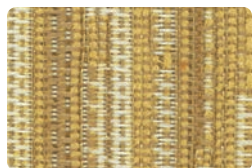
HOPSACK  
*Lemon*



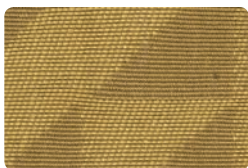
TREADLE  
*School Bus*



DRAFT  
*Beer*



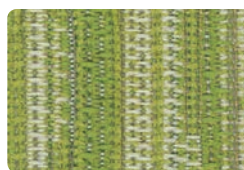
REPP  
*Straw*



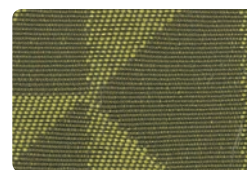
FRAMEWORK  
*Dubloon*



TREADLE  
*Celery*



REPP  
*Spring Green*



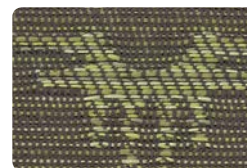
FRAMEWORK  
*Camo Green*



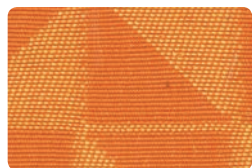
COVERLET  
*Sprout*



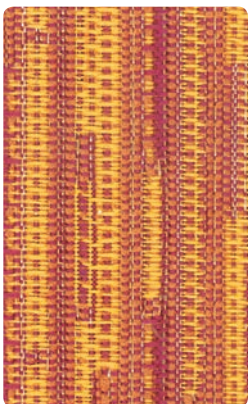
HOPSACK  
*Moss*



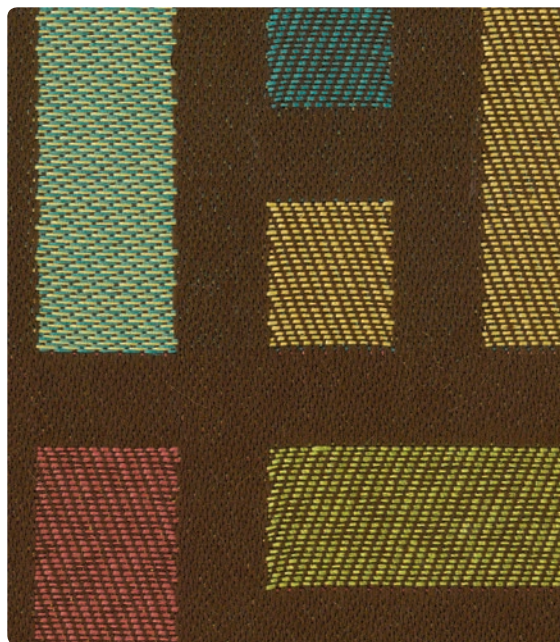
COVERLET  
*Old Moss*



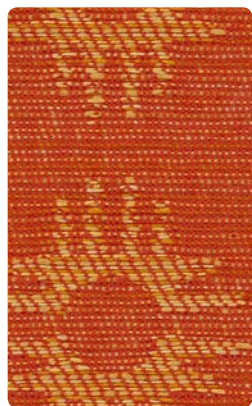
FRAMEWORK  
*Orange*



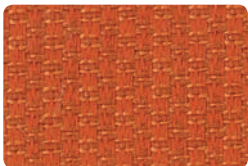
REPP  
*Sunrise*



DRAFT  
*Coffee House*



COVERLET  
*Marigold*



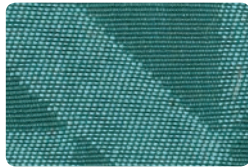
HOPSACK  
*Orangina*



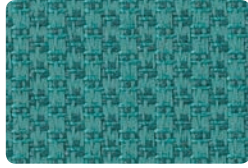
FRAMEWORK  
*Rosey*



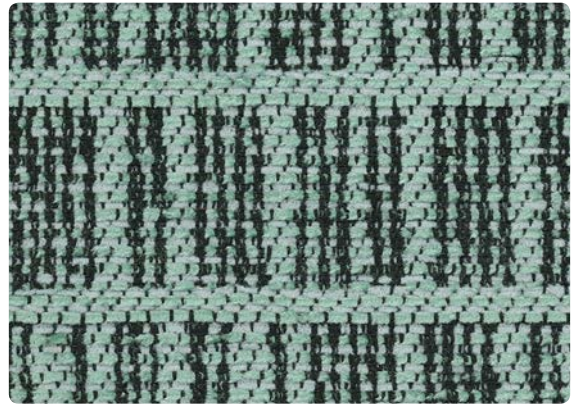
COVERLET  
*Bird Shell*



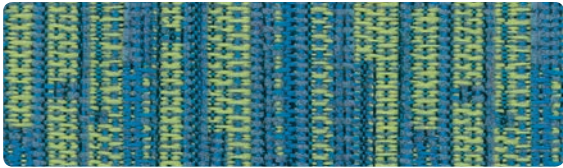
FRAMEWORK  
*Taos Teal*



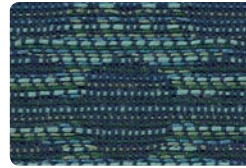
HOPSACK  
*Teal*



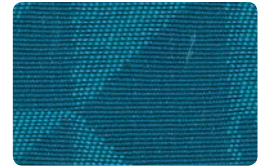
TREADLE  
*Aqua*



REPP  
*Tropicale*



COVERLET  
*Ocean Blue*



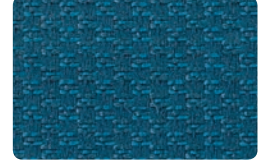
FRAMEWORK  
*Coastal Blue*



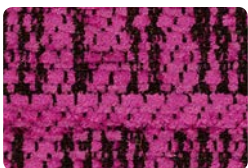
FRAMEWORK  
*Fuchsia*



TREADLE  
*Electric Blue*



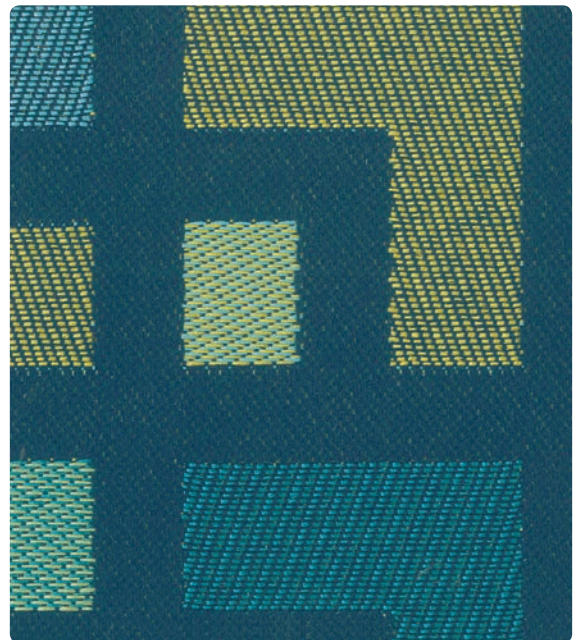
HOPSACK  
*Ensign Blue*



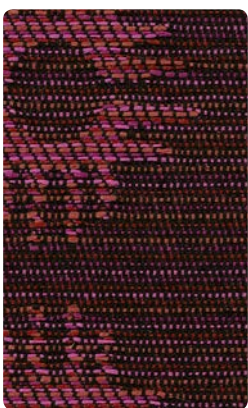
TREADLE  
*Hot Pink*



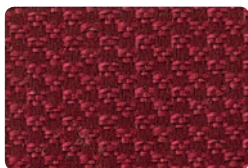
REPP  
*Corsage*



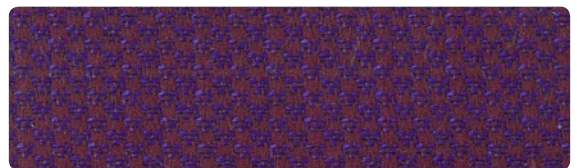
DRAFT  
*Cool Blue*



COVERLET  
*Plum*



HOPSACK  
*Cherry*



HOPSACK  
*Grape*

# Celebrating the Revival of American Manufacturing

The AMERICAN CRAFT collection reflects the elegant simplicity of hand crafting, as well as the ingenuity employed by the first American factory founders, the pioneers of textile manufacturing. Their ingenuity helped initiate the industrial revolution.

*Quality Craftsmanship*

*Elegant Simplicity*

*Cultural Traditions*

*Bold Graphics*

*Bright Colors*

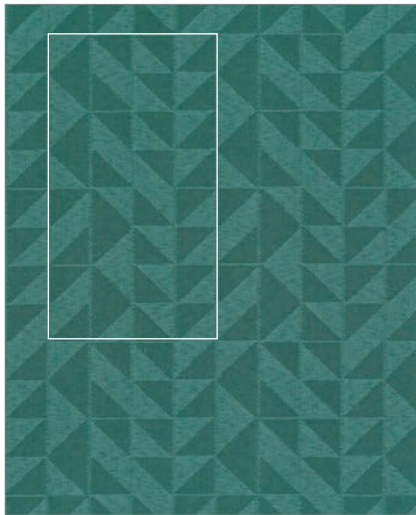
*Soft Textures*

*Coordinating Palette*

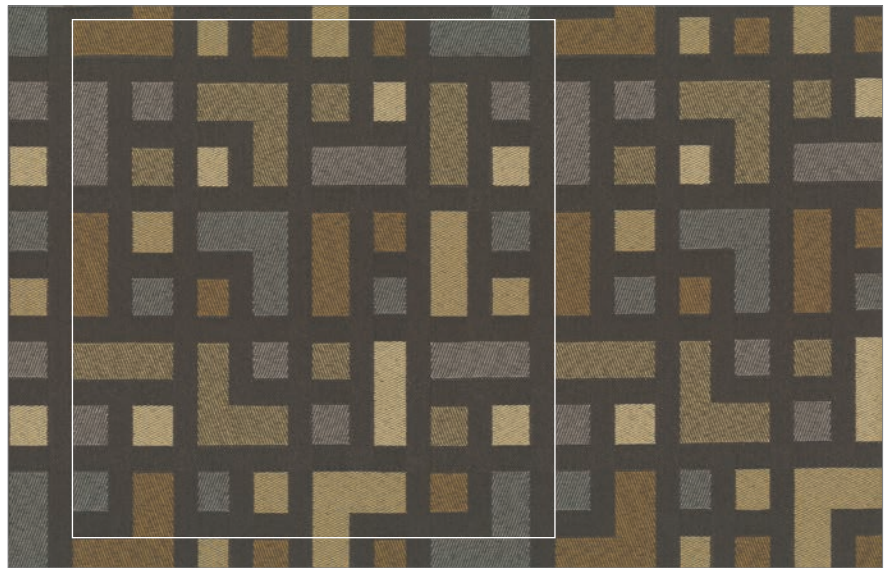
*Urban Styling*

Absecon Mills had its beginning in this movement, as William Taylor came to the United States from England and began the Taylor family's history in textiles. His son, Fred Taylor, began as a 'bobbin boy' in a textile mill in the Kensington neighborhood of Philadelphia, a neighborhood dominated by the textile industry. By the age of 42, he had risen to the founder and sole owner of Grenloch Tapestry Mills. In January of 1946, Fred's son, Howard Taylor, started weaving tapestry fabric in Pleasantville NJ and Douglass Fabrics was created. Wishing to expand, Howard started Absecon Mills in Cologne NJ, where we have just introduced the American Craft Collection as an homage to the history of the textile industry.

Still a family business with a rich tradition in textiles, Absecon is proud to make our products in America and represent the spirit of the American Craft movement.



*Framework: 3-3/16" H x 5-13/16 V"*



*Draft: 9-3/8" H x 9-7/8 V"*



*Treadle: 2-3/4" H x 3-1/4" V*



*Coverlet: 3-1/2" H x 3-5/8" V*



*Repp (Railroaded): 2-1/8" H x 2-7/8" V*

TECHNICAL INFORMATION								
Pattern/Direction Width: 54"	Fiber	Repeat	Backing   Finish (Please inquire about other available finishes to suit your specific needs)	Weight (per yard)	Cleaning Code	Abrasion ASTM 4157 (Double Rubs)	Lightfastness AATCC 16E	Seam Slippage* ASTM-D-4034
Coverlet® (Up the roll)	100% Polyester	3-1/2" H 3-5/8" V	Acrylic with Teflon®	13.8 oz.	WS	50,000 (Cotton Duck)	60 hours Class 5	Warp - 75 lbs Fill - 74 lbs
Draft® (Up the roll)	100% Polyester	9-3/8" H 9-7/8" V	Acrylic with Teflon®	13.5 oz.	WS	50,000 (Cotton Duck)	60 hours Class 5	Warp - 64 lbs Fill - 65 lbs
Framework® (Up the roll)	100% Polyester	3-3/16" H 5-13/16" V	Acrylic with Teflon®	10.7 oz.	WS	50,000 (Cotton Duck)	60 Hours Class 5	Warp - 49 lbs Fill - 89 lbs
Hopsack (Up the roll)	100% Polyester	3/16" H 3/16" V	Acrylic with Teflon®	14.7 oz.	WS	50,000 (Cotton Duck)	60 Hours Class 5	Warp - 77 lbs Fill - 65 lbs
Repp® (Railroaded)	100% Polyester	2-1/8" H 2-7/8" V	Acrylic with Teflon®	15.0 oz.	WS	75,000 (Cotton Duck)	60 Hours Class 5	Warp - 90 lbs Fill - 85 lbs
Treadle® (Up the roll)	100% Polyester	2-3/4" H 3-1/4" V	Acrylic with Teflon®	16.0 oz.	WS	50,000 (Cotton Duck)	60 Hours Class 5	Warp - 81 lbs Fill - 72 lbs

Cleaning Instructions: WS - For water based stains, use mild detergent foam or upholstery shampoo. For oil based stains, spot clean with a dry cleaning solvent being sure to test area first.



Flame Resistance: California Technical Bulletin 117-2013; NFPA 260

Fabrics by Absecon Mills, Inc. Fabric performance symbols indicate that a fabric performs to commercial furniture manufacturing standards and passes all applicable testing as specified by the Association for Contract Textiles (ACT).

06/2018 | For additional cards or memo samples:

email [samples@absecon.com](mailto:samples@absecon.com) or call 1-877-356-4557



ACADEMIC



CORPORATE



HOSPITALITY



THEATER



Absecon Mills is focused on being a responsible corporate entity and we are continually striving to find ways to help preserve our environment, increase energy efficiency and reduce waste. Our mode of manufacturing is specifically designed to prevent damage to the environment. Our products are woven using wind power and many are constructed with polypropylene (a by-product of gasoline manufacturing, utilizing post-industrial waste) and recycled polyester, which helps keep post-consumer waste in the material stream and out of landfills. Absecon offers finishes that use ten times less fluorocarbons than conventional finishes and are SCS Indoor Advantage Gold certified. We participate in a fabric recycling program and work hard to lessen our footprint on the environment. For more information on our green initiatives, please visit [www.absecon.com](http://www.absecon.com)



WOVEN WITH  
WIND POWER

Colors may vary slightly from dye lot to dye lot.

\*ASTM-D-4034: Seam 12mm from edge using 7 stitches per 25mm (1"), plain lock stitch and a 22 ballpoint needle)

